



**Friends of  
the Earth  
Europe**



**PRESENTATION**

**FANNY BOERAEVE**

Wallonian Ministry for Environment (formerly)  
University of Liège (currently)

---

26 June 2024, 14:00-17:00 CET  
Brussels and online

*Multiburo Brussels EU Parliament,  
Square de Meeus 38-40*





# Walloon Agroecological Transition Plan

## TERRAE

26.06.2024

Fanny Boeraeve



# The Origin of Terrae: ‘Get Up Wallonia!’



**Novembre 2020: Public consultation after COVID crisis**

- ‘Plan de Relance de la Wallonie’  
= 7 billions € and >300 projects

**Among which the project: « Terrae »**

- ✓ 6 millions €
- ✓ 7 projects
- ✓ 4 years

# The Walloon Agroecological Transition Plan

Communication  
website

Network of 40 farms  
accompanied to  
undergo AE transition

Tool to assess functional  
biodiversity on farms



Participatory action research: 18  
farmer groups

Reference framework  
for agroecological  
practices

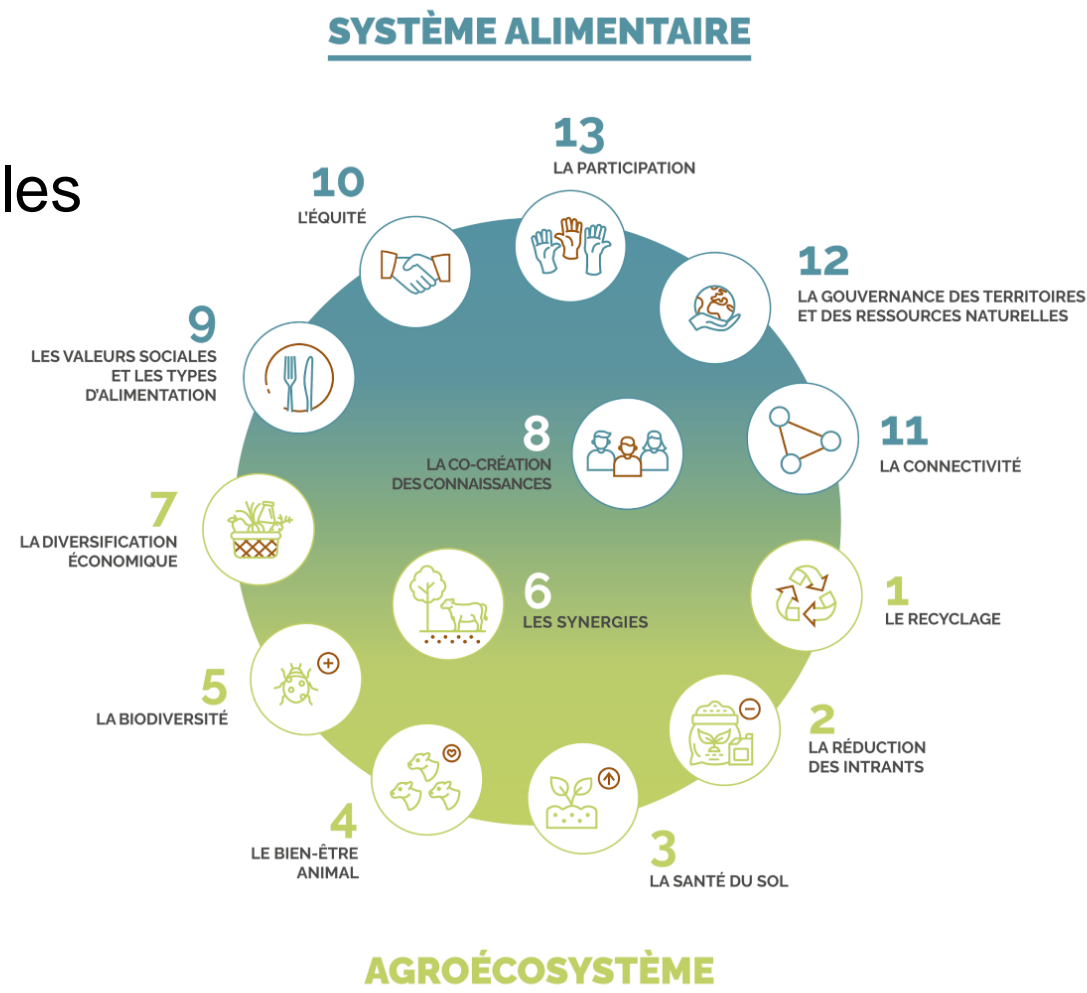
Feasibility study on the payment for  
ecosystem services to farmers

Further development of the  
tool DECiDE

# 1. Agroecology framework

## Objectives :

- ✓ Definition: define the concept and principles
- ✓ Agroecological practices catalogue
- ✓ Agroecological diagnostic tool



# The Walloon Agroecological Transition Plan

Tool to assess functional  
biodiversity on farms



Reference framework  
for agroecological  
practices





## 2. Functional biodiversity assessment tool



- Objectives: Develop operational expertise in assessing functional biodiversity on farms, with a strong focus on biological control and soils, on the scale of entire farms and in their landscape context.



# The Walloon Agroecological Transition Plan

Communication website



Tool to assess functional biodiversity on farms



Reference framework for agroecological practices



Service public de Wallonie agriculture ressources naturelles environnement

➤ [Le plan de transition agroécologique](#)



## 3. Communication website

👉 <https://www.terrae-agroecologie.be/>

- Testimonials
- Technical references
- Science popularisation
- Collaborative content submission system
- Links to other initiatives
- Agenda



# The Walloon Agroecological Transition Plan

Communication  
website

Tool to assess functional  
biodiversity on farms



Reference framework  
for agroecological  
practices



Network of 40 farms  
accompanied to  
undergo AE transition



Service public de Wallonie **agriculture ressources naturelles environnement**

➤ [Le plan de transition agroécologique](#)

## 4. The network 'Terraë'

- A network of **40 farms** supported in their agro-ecological transition.
- A wide **variety of agricultural systems** and are **at different stages of the agroecological transition**.
- On a **voluntary** basis
- Agroecological **diagnosis > Action plan > Experimental setups** on the farms
- **Collective support** including training, network days, field tours and other collective events.

# The Walloon Agroecological Transition Plan

Communication  
website

Tool to assess functional  
biodiversity on farms



Reference framework  
for agroecological  
practices



Network of 40 farms  
accompanied to  
undergo AE transition



Participatory action research: 18  
farmer groups



Service public de Wallonie **agriculture ressources naturelles environnement**

➤ [Le plan de transition agroécologique](#)



# 5. Farmers groups

- 18 groups
- >20farms per group
- 1 steering institution per group



BIO WALLONIE



Le Brabant wallon



Terre-en-vue



Regenacterre  
L'agriculture régénérative en action



Parc naturel  
PLAINES  
DE L'ESCAUT



Comice du  
Gondroz



scam

Société Coopérative Agricole de la Meuse



RHEA  
NATURAL RESOURCES,  
HUMAN ENVIRONMENT  
AND AGRONOMY

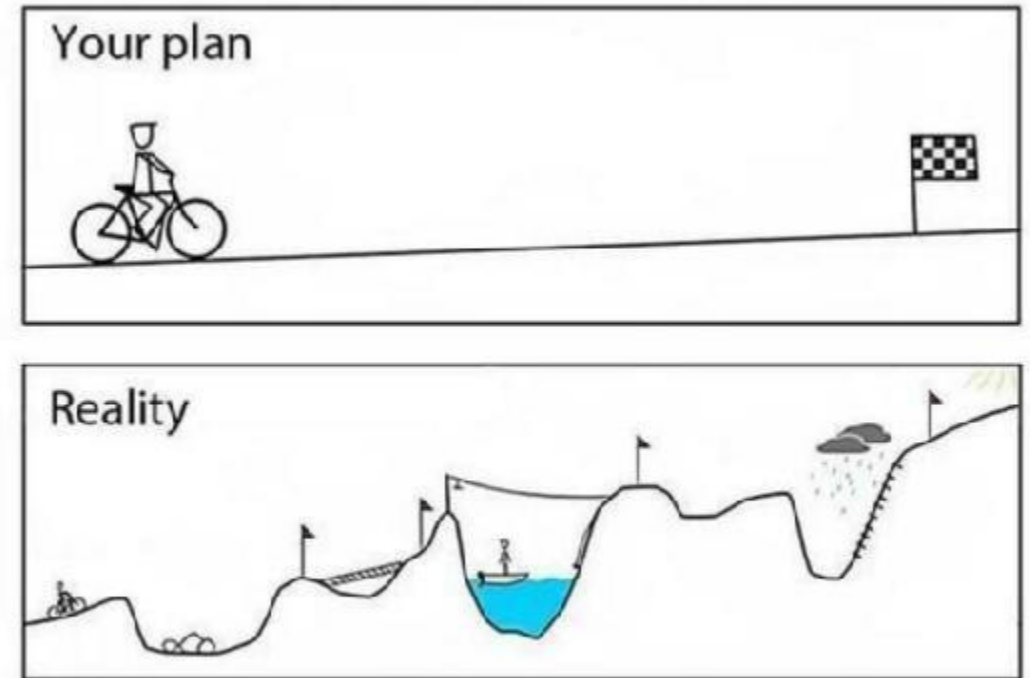


Service public de Wallonie agriculture ressources naturelles environnement

## 5. Farmer groups

### Objectives

- Participatory Action Research
- Transition = a real challenge
- Getting together, sharing and capitalising on each other's experience
- Getting support
- Farmers also become researchers: they enter a process of questioning and trial and error/success



# The Walloon Agroecological Transition Plan

Communication  
website

Tool to assess functional  
biodiversity on farms



Reference framework  
for agroecological  
practices



Network of 40 farms  
accompanied to  
undergo AE transition



Participatory action research: 18  
farmer groups

**CLIMACT**

Feasibility study on the payment for  
ecosystem services to farmers



Service public de Wallonie **agriculture ressources naturelles environnement**

➤ [Le plan de transition agroécologique](#)

## 6. Feasibility study of paying farmers for ecosystem services - objectives

- Define interests, weaknesses and feasibility of remunerating farmers who produce environmental services.
- Services studied: carbon reduction and storage, biodiversity and soil health.
  - Development of a best practice guide for such payments in Wallonia.



# The Walloon Agroecological Transition Plan

Communication  
website

Tool to assess functional  
biodiversity on farms



Reference framework  
for agroecological  
practices



Further development of the  
tool DECiDE



Service public de Wallonie **agriculture ressources naturelles environnement**

➤ [Le plan de transition agroécologique](#)

Network of 40 farms  
accompanied to  
undergo AE transition



Participatory action research: 18  
farmer groups

**CLIMACT**

Feasibility study on the payment for  
ecosystem services to farmers



## 7. Further development of the tool 'DECiDE'



- Assessing the farm's sustainability based on:
  - GEG emissions
  - Ammonia
  - Energy use
- Specific to the Walloon context
- Based on LCA approach
- Integrating the 3 pillars of sustainability:
  - Social
  - Economic
  - Environmental

□ <https://decide.cra.wallonie.be/fr/about>

# TERRAÉ in conclusion

- Helping farmers through participatory action research, the dissemination of practical knowledge on agroecological practices.
- The birth of a fertile ground for agroecology, of a community of practices.





# Agroecology beyond TERRAE



Food system



Organic agriculture



Pesticides



## Barriers to the agroecological transition

- Having distinct Ministries for Envi and Agri
- Division of power/competencies between Federal and Regions
- Difficulties to report at EU level on a joint Belgian position

## Levers to the agroecological transition

- Develop independent farm advisory services
- Ensure long term investment despite short/mid term political agendas
- Integreate agroecology as the mainstream agricultural model
- Focus should be on acting: research, projects, etc. sould not prevent action and regulation

# Thank you

- Fanny BOERAEVE: [f.boeraeve@uliege.be](mailto:f.boeraeve@uliege.be), Gembloux Agro-Bio Tech, Liege University
- Arnaud STAS: [arnaud.stas@spw.wallonie.be](mailto:arnaud.stas@spw.wallonie.be), Cellule Intégration Agriculture-Environnement, Service Public de Wallonie (SPW)